

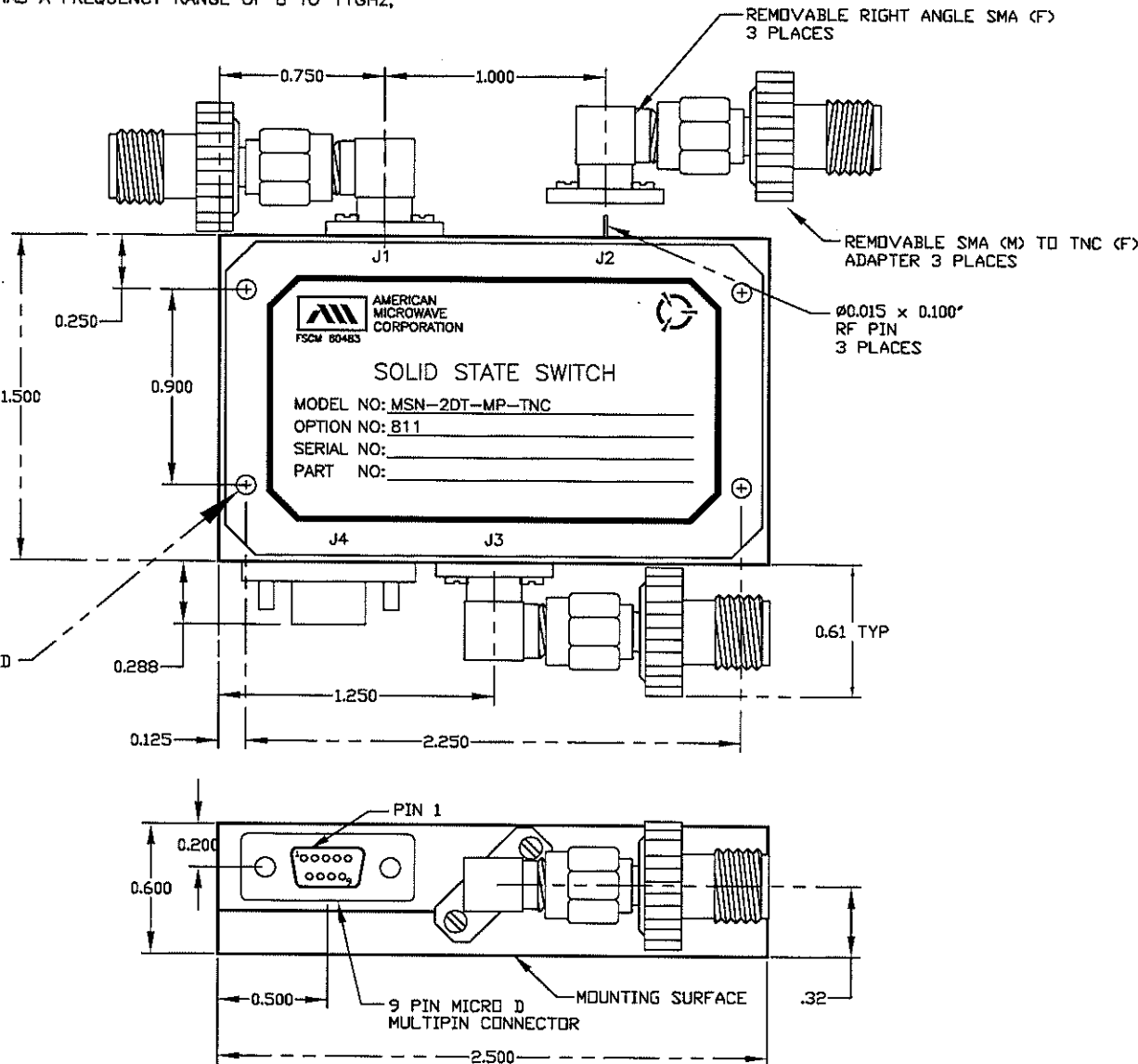
DESCRIPTION:

AMC MODEL MSN-2DT-MP-TNC IS A SINGLE POLE TWO THROW SWITCH WITH A 9 PIN MULTIPIN CONNECTOR AND RIGHT ANGLE SMA CONNECTORS WITH SMA TO TNC FEMALE ADAPTERS. IT HAS A FREQUENCY RANGE OF 8 TO 11GHz, 60dB ISOLATION AND 3.5dB INSERTION LOSS.

REVISIONS				
ZONE	REV.	DESCRIPTION	DATE	APPROVED
-	-	ORIGINAL RELEASE	9/12/07	

SPECIFICATIONS:

- FREQUENCY: 8 TO 11 GHz
- INSERTION LOSS: 3.5dB
- ISOLATION: 8 TO 11 GHz: 60db
- VSWR: ABSORPTIVE IN/OUT: 2.0:1
 ABSORPTIVE OUT/OFF: 2.0:1
- SPEED: RISE: 10ns TYPICAL, 15ns MAX.
 FALL: 10ns TYPICAL, 15ns MAX.
 DELAY ON: 75ns TYPICAL, 100ns MAX.
 DELAY OFF: 75ns TYPICAL, 100ns MAX.
- POWER INPUT: (CW)+20dBm (STANDARD), +10 dBm (HIGH SPEED)
- SURVIVAL POWER: 1 WATT CW, 10 WATTS PEAK 1 usec
- CONTROL: TTL LOGIC "0" J3-J1 = ON
 TTL LOGIC "1" J3-J2 = ON
- POWER SUPPLY: +5V @ 100 mA MAX.
 -5V @ 100mA MAX.



PIN OUT TABLE	
3 BIT DECODER	
PIN NO.	FUNCTION
1	E1
2	N/C
3	N/C
4	N/C
5	N/C
6	GND
7	+V
8	-V
9	GND

NOTE:

DR=WITH DRIVER, REFLECTIVE
 DT=WITH DRIVER, NON-REFLECTIVE/ABSORPTIVE

ENVIRONMENTAL RATINGS:

- TEMPERATURE: -55°C TO +85°C (OPERATING)
 -65°C TO +125°C (STORAGE)
- HUMIDITY: MIL-STD-202F, METHOD 103B COND. B
- SHOCK: MIL-STD-202F, METHOD 213B COND. B
- VIBRATION: MIL-STD-202F, METHOD 204D COND. B
- ALTITUDE: MIL-STD-202F, METHOD 105C COND. B
- TEMPERATURE CYCLE: MIL-STD-202F, METHOD 107D COND. A

ALL DIMENSIONS ARE IN INCHES
 TOLERANCES:

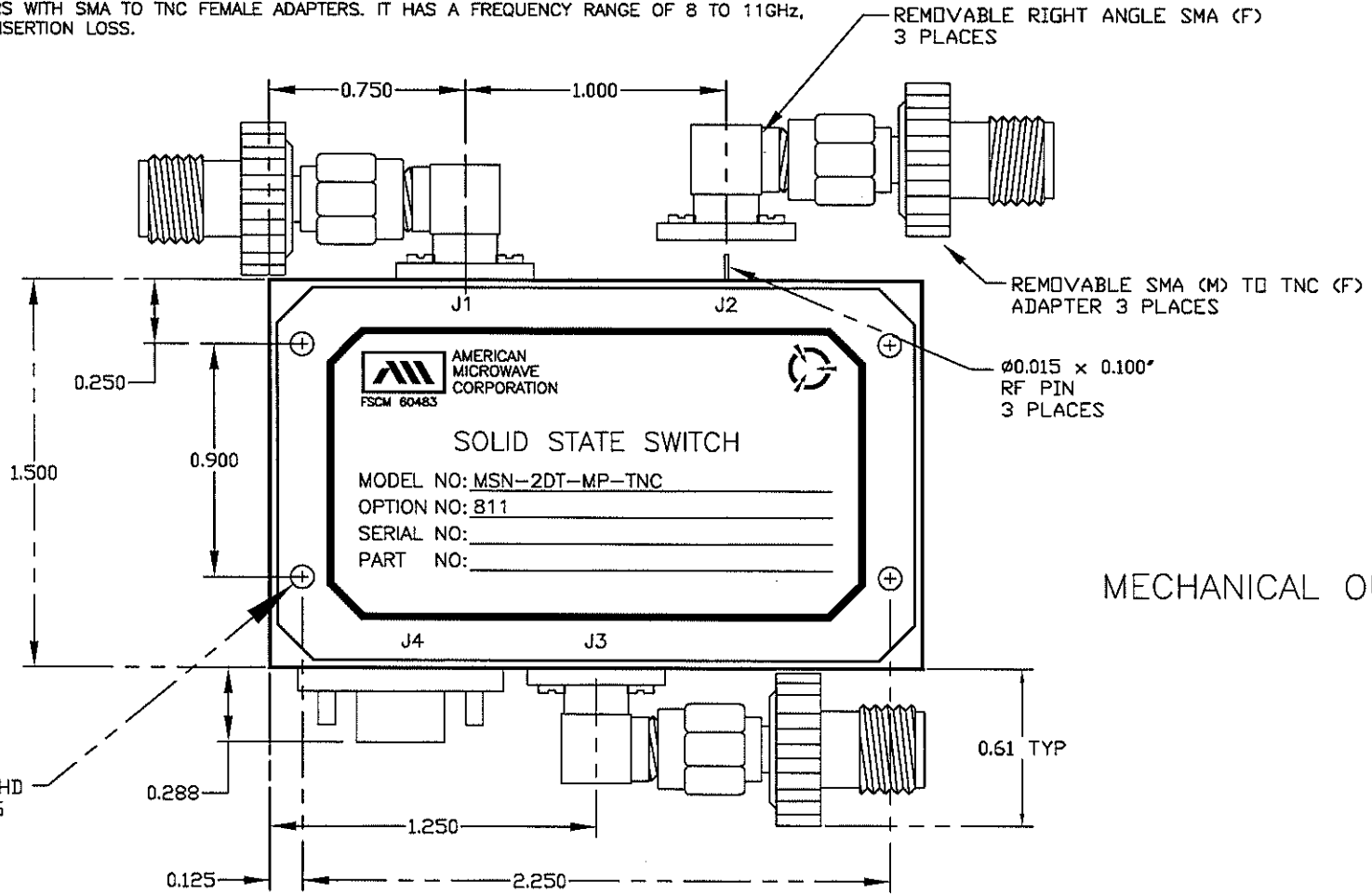
- X.XX ±0.020
- X.XXX ±0.010

NOTE: THE ABOVE SPECIFICATIONS ARE SUBJECT TO CHANGE OR REVISION

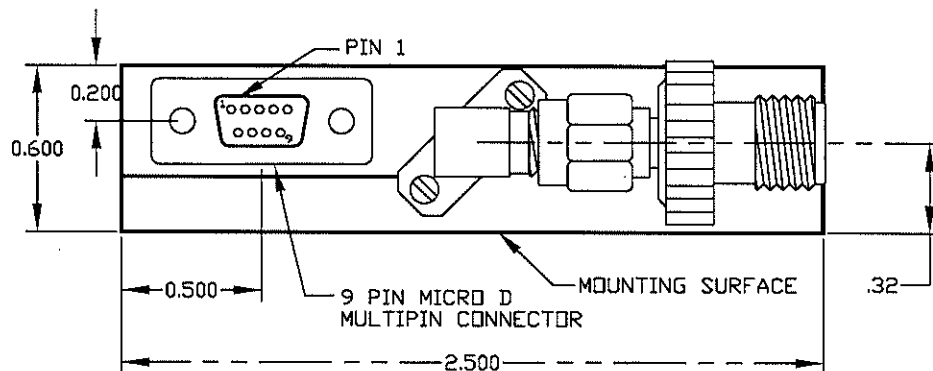
PART NO.		AMERICAN MICROWAVE CORPORATION FREDERICK, MARYLAND	
APPROVALS	DATE	TITLE	
DRAWN <i>KMS</i>	9/19/07	OUTLINE DRAWING MSN-2DT-MP-TNC OPTION 811 NON-REFLECTIVE/ABSORPTIVE SOLID STATE SWITCH	
CHECKED <i>LA</i>	10/2/07	SIZE	FSCM NO.
ISSUED		A	60483
		DWG NO.	100-M012-000
		SCALE	N/S
		SHEET	1 OF 3


DESCRIPTION:

AMC MODEL MSN-2DT-MP-TNC IS A SINGLE POLE TWO THROW SWITCH WITH A 9 PIN MULTIPIN CONNECTOR AND RIGHT ANGLE SMA CONNECTORS WITH SMA TO TNC FEMALE ADAPTERS. IT HAS A FREQUENCY RANGE OF 8 TO 11GHZ, 60dB ISOLATION AND 3.5dB INSERTION LOSS.



MECHANICAL OUTLINE



			
AMERICAN MICROWAVE CORPORATION FREDERICK, MARYLAND			
TITLE		OUTLINE DRAWING MSN-2DT-MP-TNC OPTION 811 NON-REFLECTIVE/ABSORPTIVE SOLID STATE SWITCH	
SIZE	FSCM NO.	DWG NO.	REV.
A	60483	100-M012-000	-
SCALE N/S		SHEET 2 OF 3	